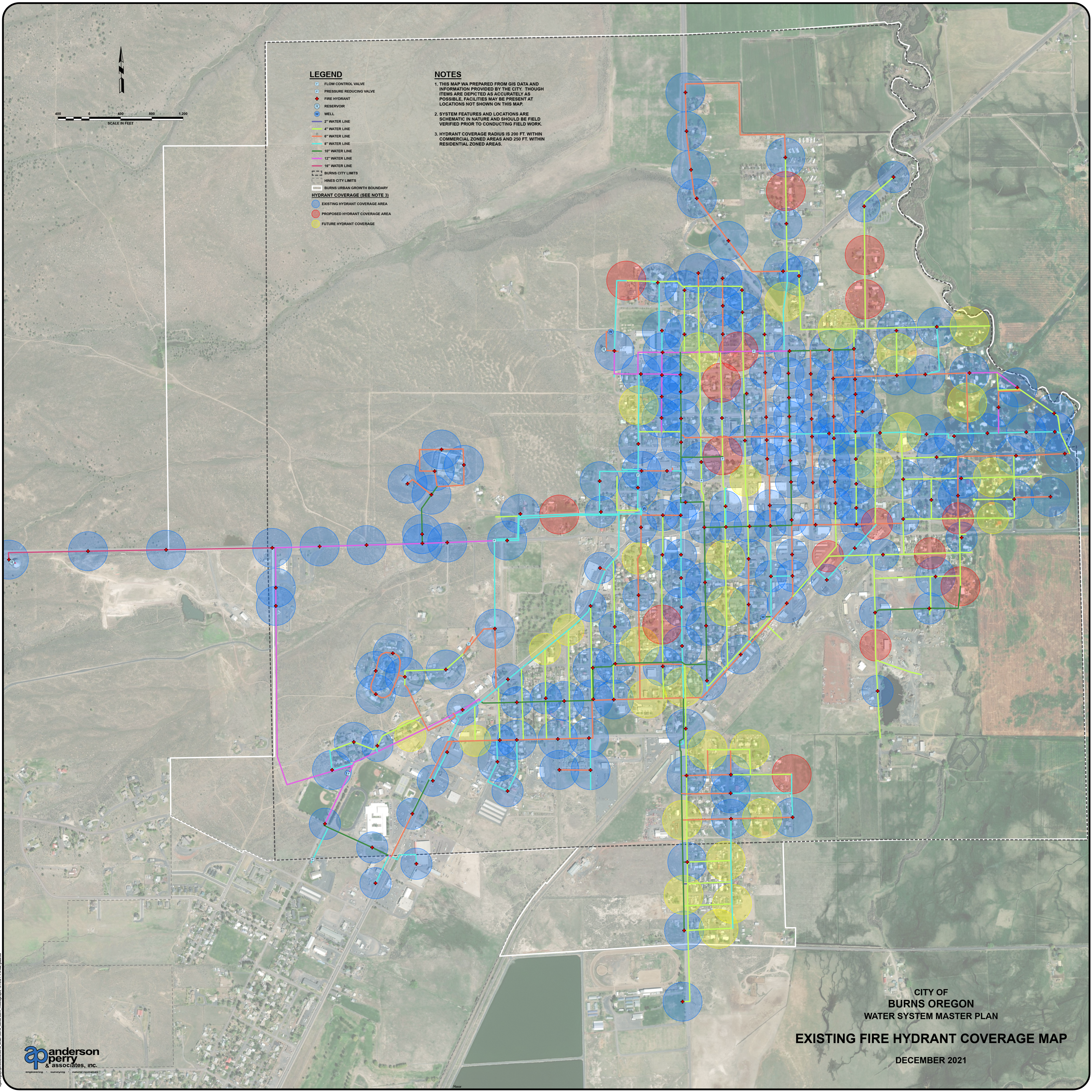


LEGEND

- FLOW CONTROL VALVE
- PRESSURE REDUCING VALVE
- FIRE HYDRANT
- ⊕ RESERVOIR
- ⊕ WELL
- 2" WATER LINE
- 4" WATER LINE
- 6" WATER LINE
- 8" WATER LINE
- 10" WATER LINE
- 12" WATER LINE
- 16" WATER LINE
- BURNS CITY LIMITS
- HINES CITY LIMITS
- BURNS URBAN GROWTH BOUNDARY
- EXISTING HYDRANT COVERAGE AREA
- PROPOSED HYDRANT COVERAGE AREA
- FUTURE HYDRANT COVERAGE AREA

NOTES

1. THIS MAP WAS PREPARED FROM GIS DATA AND INFORMATION PROVIDED BY THE CITY. THOUGH ITEMS ARE DEPICTED AS ACCURATELY AS POSSIBLE, FACILITIES MAY BE PRESENT AT LOCATIONS NOT SHOWN ON THIS MAP.
2. SYSTEM FEATURES AND LOCATIONS ARE SCHEMATIC IN NATURE AND SHOULD BE FIELD VERIFIED PRIOR TO CONDUCTING FIELD WORK.
3. HYDRANT COVERAGE RADIUS IS 200 FT. WITHIN COMMERCIAL ZONED AREAS AND 250 FT. WITHIN RESIDENTIAL ZONED AREAS.



CITY OF
BURNS OREGON
WATER SYSTEM MASTER PLAN

EXISTING FIRE HYDRANT COVERAGE MAP

DECEMBER 2021